

SEQUENCE

S6 Series

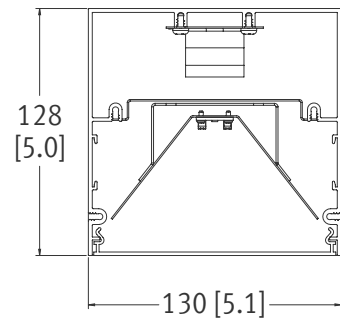
Introducing Metalumen's SEQUENCE S6 series - an elegant, large scale, LED linear luminaire with our widest line of light for direct distribution

The S6 visually stands out with a distinctive groove along the side of the body. It is available in pendant, surface, recessed drywall, recessed t-bar, and is compatible with the TechZone ceiling system.

An extruded aluminum body keeps the S6 relatively light-weight despite its robust profile. With a 5-inch luminous opening, this highly efficient luminaire delivers more illumination, and when combined with a standard dimming driver, it becomes an extremely versatile and ideal lighting solution for large open spaces, intimate offices, and everything in between.

The S6 is ideal for:

- Showrooms
- Corridors
- Reception Areas
- Cafeterias
- Libraries
- Boardrooms
- Lecture Halls
- Laboratories
- Offices of all sizes



ARCHITECTURAL ACCENTS

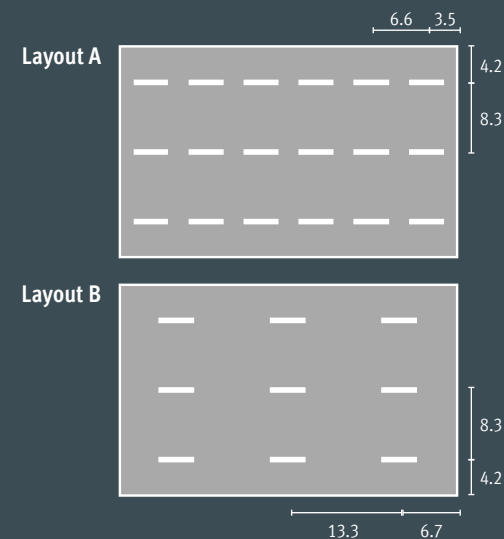
The S6 goes beyond lighting in straight lines. Corner and grid configurations are possible with the S6 corner section. It is designed to easily connect to mid units, and with a self-contained driver, it allows the freedom to create an array of configurations that seamlessly illuminate around 90-degree corners. Standard square grid patterns are available starting at 4x4 ft up to 12x12 ft. Consult factory for custom configurations.



OPEN OFFICE CALCULATION SUMMARIES

Room Size: 40 x 25' | Ceiling Height: 10' | Reflectance: 80/50/20

	LAYOUT A	LAYOUT B
Suspension Height	0 ft	0 ft
Catalogue Number	S6-1L35K-4-M-L3	S6-1L35K-4-M-L4
Number of 4' luminaires	18	9
Watts/4' luminaires	24.2	49.8
Lumens / 4' luminaires	2850	5248
Spacing	8'	8'
Lighting Power Density	0.44 W/sq ft	0.45 W/sq ft



PRODUCT PERFORMANCE COMPARISON

Sequence S6 Series vs. Grande RM4D LED Series

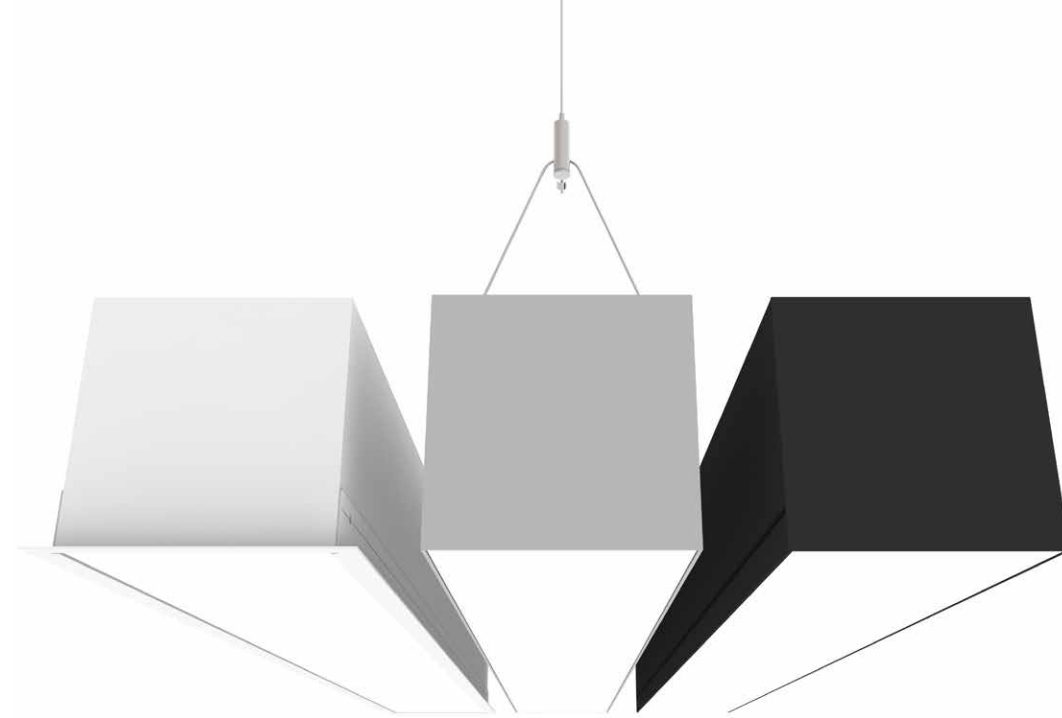
PERFORMANCE *	S6-35K-L3	RM4D-35K-L3	S6-35K-L4	RM4D-35K-L4
Delivered Lumens	2849	2864	5255	5490
Wattage	24.2	23.9	49.8	47.8
Efficacy	118	120	106	115
Input Current	201	350	416	700
ROOM STUDY - 40 x 25 x 10				
# Luminaires	18	18	9	9
AVG (fc)	41	41	38	39
LPD (lm/sq ft)	0.44	0.43	0.45	0.43

*S6 performance results are subject to change due to Metalumen's continuous improvement practices. For latest, please visit metalumen.com

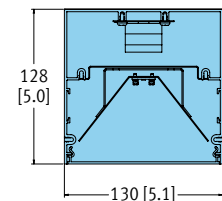
STANDARD FINISHES

- White
- Satin Aluminum

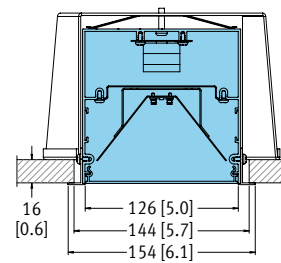
For custom finishes, consult factory or indicate RAL # on the spec sheet.



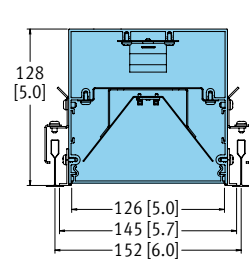
S6 BODY Dimensions



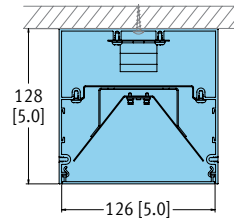
MOUNTING



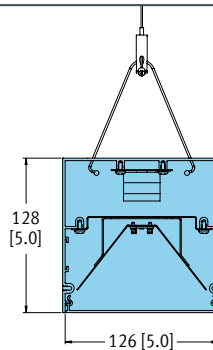
RECESSED DRYWALL



RECESSED T-BAR
(TechZone Compatible)



SURFACE



PENDANT

PRODUCT SPECIFICATIONS

HOUSING Rigid extruded aluminum body, 2.0mm (0.08") nominal wall thickness, and steel formed end caps.

OPTICAL SYSTEM Optical System MetaLED mid flux LED technology transmits to an internal high performance-side kicking reflector that then passes through our Meta Ice acrylic diffuser for smooth distribution, creating a continuum of smooth consistent light.

CRI 83+ (3500K) (80 minimum for all CCT) Consult factory for 90+ CRI.

LUMEN MAINTENANCE At an ambient operating temperature of 35°C, the LED lifetime expectancy > 60 000hrs at L85.

FINISH Satin aluminum and white are standard finishes. For custom finish, contact factory.

WEIGHT 1.7 kg/300mm [3.8 lb/ft]

MOUNTING PENDANT - Aircraft cable yoke complete with a Quick-Grip field adjustable suspension system provides for quick and easy on-site alignment. **RECESSED DRYWALL** - Mounting brackets/clips provided.

RECESSED T-BAR - optimized for 15/16" t-bars. Will work with most 9/16" t-bars. TechZone compatible. Mounting brackets/clips provided. **SURFACE** - Mounted directly to ceiling.

ELECTRICAL Factory prewired with easy wire quick connect sections.

DRIVERS Metalumen offers dimming drivers as a standard on our entire LED product offering at 0-10V. Dimming is 10%-100% range. Power factor is > 90% with a Class 2 rating.

CONTROLS Controls are placed into a blanking plate on the end fixture or at the end of an alone fixture.

APPROVALS Certified to NRTL safety and IES Recommendation testing standards. All components are UL/CSA/QPS recognized or listed, RoHS, LM79, LM80 and LM82 compliant.

ENVIRONMENT Suitable for dry or damp locations.

WARRANTY Metalumen will warrant defective luminaires for 5 years from date of purchase. Warranty is valid if luminaire is installed and used according to specification. If defective, Metalumen will send replacement boards or drivers at no cost along with detailed replacement instructions and instructions on how to return defective components to Metalumen.



ORDERING LOGIC

Example: S6-1L35K-4-M-W-L31-T-1-D

	RECESSED	PENDANT	SURFACE	GRID/CORNER
Color Temp	1L30K 3000K 1L35K 3500K 1L40K 4000K	1L30K 3000K 1L35K 3500K 1L40K 4000K	1L30K 3000K 1L35K 3500K 1L40K 4000K	1L30K 3000K 1L35K 3500K 1L40K 4000K
Size / Configuration	2-12 ft Available in 2 to 12 ft at 1 ft increments R Continuous Rows C Custom Length (Consult factory)	2-12 ft Available in 2 to 12 ft at 1 ft increments R Continuous Rows C Custom Length (Consult factory)	2-12 ft Available in 2 to 12 ft at 1 ft increments R Continuous Rows C Custom Length (Consult factory)	4G 4 x 4 ft Grid 6G 6 x 6 ft Grid 8G 8 x 8 ft Grid 10G 10 x 10 ft Grid 12G 12 x 12 ft Grid X Custom Configuration (Consult factory)
Optics Up	Empty None (Leave empty)	Empty None (Leave empty)	Empty None (Leave empty)	Empty None (Leave empty)
Optics Down	M Metalce	M Metalce	M Metalce	M Metalce
Finish	SA Satin Aluminum W White C Custom Finish Specify RAL #	SA Satin Aluminum W White C Custom Finish Specify RAL #	SA Satin Aluminum W White C Custom Finish Specify RAL #	SA Satin Aluminum W White C Custom Finish Specify RAL #
Light Level/Driver	L1 1730 L2 2133 L3 2850 L4 5248	L1 1730 L2 2133 L3 2850 L4 5248	L1 1730 L2 2133 L3 2850 L4 5248	L1 1730 L2 2133 L3 2850 L4 5248
Circuitry	1 1 Circuit EM Emergency/Night Light B Battery Pack EMB Emergency/Night Light & Battery Pack	1 1 Circuit EM Emergency/Night Light B Battery Pack EMB Emergency/Night Light & Battery Pack	1 1 Circuit EM Emergency/Night Light B Battery Pack EMB Emergency/Night Light & Battery Pack	1 1 Circuit EM Emergency/Night Light B Battery Pack EMB Emergency/Night Light & Battery Pack
Mounting	D Recessed Drywall Flanged T Recessed T-Bar Flanged	PA Pendant Aircraft Cable PT Pendant Aircraft Cable for T-Bar	S Surface Mount	PA Pendant Aircraft Cable PT Pendant Aircraft Cable for T-Bar D Recessed Drywall Flanged T Recessed T-Bar Flanged S Surface
Voltage	1 120 V 2 277 V 3 347 V 4 Universal (120-277 V)	1 120 V 2 277 V 3 347 V 4 Universal (120-277 V)	1 120 V 2 277 V 3 347 V 4 Universal (120-277 V)	1 120 V 2 277 V 3 347 V 4 Universal (120-277 V)
Controls	Empty None (Leave empty) D Daylight Sensor O Occupancy Sensor DO Daylight/Occupancy Sensor	Empty None (Leave empty) D Daylight Sensor O Occupancy Sensor DO Daylight/Occupancy Sensor	Empty None (Leave empty) D Daylight Sensor O Occupancy Sensor DO Daylight/Occupancy Sensor	Empty None (Leave empty) D Daylight Sensor O Occupancy Sensor DO Daylight/Occupancy Sensor

1 Based on 4 ft sections | 2 Currently available with L3 & L4 only

LUMEN PACKAGES and DISTRIBUTION CURVES

File Name	S6-1L35K-4-M-L1	S6-1L35K-4-M-L2	S6-1L35K-4-M-L3	S6-1L35K-4-M-L4
Luminaire Lumens:	1730	2133	2850	5248
Total Watts:	13.8	17.6	24.2	49.8
Efficacy:	125 lms/W	121 lms/W	118 lms/W	105 lms/W
Optics Down:	Meta Ice	Meta Ice	Meta Ice	Meta Ice



SEQUENCE
S6 Series
LED Pendant, Surface & Recessed Luminaires

Metalumen Manufacturing Inc.
570 Southgate Drive
Guelph, Ontario, Canada
N1G 4P6

Toll Free: 1.800.621.6785
Tel: 1.519.822.4381
Fax: 1.519.822.4589

Mailing Address:
PO Box 1779
Guelph, Ontario, Canada
N1H 6Z9

www.metalumen.com

All dimensions are nominal and subject to tolerances. We reserve the right to make changes that will not alter installed appearance, function or performance. These designs remain the property of Metalumen. We reserve the exclusive right to reproduce them and to manufacture the items illustrated herein. Some combinations may not be available, consult factory. Metalumen is a registered trademark. R0-20170208

Copyright ©2017 Metalumen Manufacturing Inc.
All rights reserved.