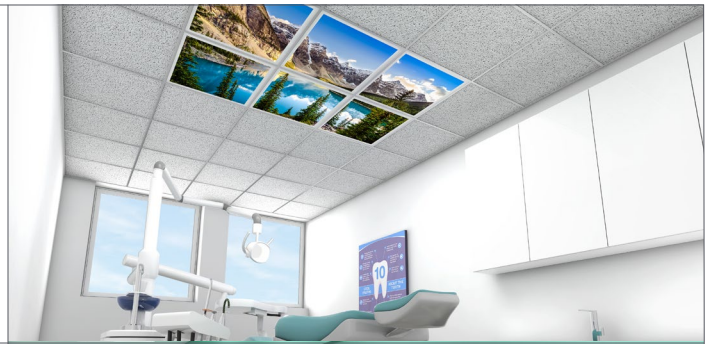


SCENE PHOTO GRAPHICS

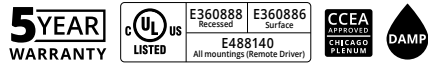
SCE . LED . DIRECT



PART #:		DATE:	
PREP BY:		QTY:	
PROJECT:		NOTES:	
APPROVAL SIGNATURE:		DATE (DD/MM/YYYY):	



- Specification grade edgelit light guide luminaire
- Four standard graphics to choose from
- Various configuration patterns
- Pendant with power over aircraft cable, recessed and surface mount options



ORDERING LOGIC

Example Part Number: SCE-2L50K-22-G1A-W-L41-P1-1-NR

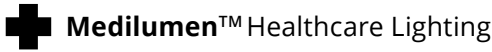
SCE	2L50K	3	4 & 5	6	L4	1	9	10	11	12		
PENDANT	1. SERIES SCE	4. OPTICS & 5. CONFIGURATION G1 Sky G2 Ocean Life G3 Mountains G4 Beach CG Custom Graphic ¹		6. FINISH W White AM Antimicrobial White Paint C Custom Finish Specify RAL:	7. LIGHT LEVEL / DRIVER L4 3269 lm (2x2) 5498 lm (1x4)		9. MOUNTING P1 Power Over Aircraft Cable 18" P2 Power Over Aircraft Cable 48" P3 Power Over Aircraft Cable 60"		10. VOLTAGE 1 120 V 2 277 V 3 347 V ² 4 UNV (120 - 277 V)		11. CONTROLS N None R Remote	
	2. COLOR TEMP 2L50K 5000K	See pages 5-8 for complete Configuration Codes			8. CIRCUITRY 1 1 Circuit		12. DRIVER LOCATION R Remote					
	3. SIZE 22 2 x 2 ft 14 1 x 4 ft											
RECESSED	1. SERIES SCE	4. OPTICS & 5. CONFIGURATION G1 Sky G2 Ocean Life G3 Mountains G4 Beach CG Custom Graphic ¹		6. FINISH W White AM Antimicrobial White Paint C Custom Finish Specify RAL:	7. LIGHT LEVEL / DRIVER L4 3269 lm (2x2) 5498 lm (1x4)		9. MOUNTING T Recessd T-bar D Recessed Drywall		10. VOLTAGE 1 120 V 2 277 V 3 347 V ² 4 UNV (120 - 277 V)		11. CONTROLS N None R Remote	
	2. COLOR TEMP 2L50K 5000K	See pages 5-8 for complete Configuration Codes			8. CIRCUITRY 1 1 Circuit		12. DRIVER LOCATION N None (Integral) R Remote					
	3. SIZE 22 2 x 2 ft 14 1 x 4 ft											
SURFACE	1. SERIES SCE	4. OPTICS & 5. CONFIGURATION G1 Sky G2 Ocean Life G3 Mountains G4 Beach CG Custom Graphic ¹		6. FINISH W White AM Antimicrobial White Paint C Custom Finish Specify RAL:	7. LIGHT LEVEL / DRIVER L4 3269 lm (2x2) 5498 lm (1x4)		9. MOUNTING S Surface (Remote Driver) SI Surface Integral (Integral Driver) SC Concrete or Metal Surface (Integral Driver)		10. VOLTAGE 1 120 V 2 277 V 3 347 V ² 4 UNV (120 - 277 V)		11. CONTROLS N None R Remote	
	2. COLOR TEMP 2L50K 5000K	See pages 5-8 for complete Configuration Codes			8. CIRCUITRY 1 1 Circuit		12. DRIVER LOCATION No options. Leave space empty.					
	3. SIZE 22 2 x 2 ft 14 1 x 4 ft											

*Please note Light Level Codes have been updated in accordance with UL certification standards. | 1 Customer must provide their own high-res PDF file. | 2. Consult factory

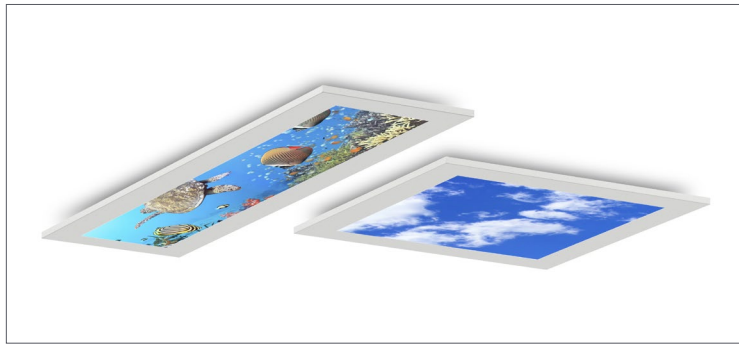
- Select Driver:
- Factory option 0-10V, 1% Dimming
 - D2** DALI
 - LHE** Lutron H-Series Hi-lume 1% EcoSystem LED Driver
 - L5E** Lutron 5-Series EcoSystem LED Driver

SCENE PHOTO GRAPHICS

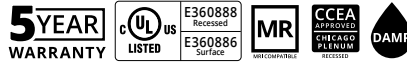
SCEM (MEDICAL) . LED . DIRECT



PART #:	
PREP BY:	DATE:
PROJECT:	QTY:
NOTES:	
APPROVAL SIGNATURE:	DATE (DD/MM/YYYY):



- Specification grade edgelit light guide luminaire
- Four standard graphics to choose from
- Various configuration patterns
- Recessed and surface mount options
- Remote driver



ORDERING LOGIC

Example Part Number: SCEM-2L50K-22-G1A-AM-L41-T-1-NN

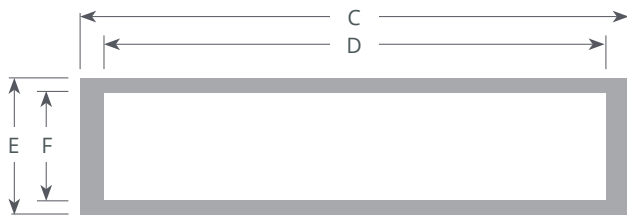
SCEM	2L50K				AM	L4	1				
1	2	3	4 & 5		6	7	8	9	10	11	12

1. SERIES SCE	4. OPTICS & 5. CONFIGURATION G1 Sky G2 Ocean Life G3 Mountains G4 Beach CG Custom Graphic ¹	6. FINISH AM Antimicrobial White Paint	7. LIGHT LEVEL* / DRIVER ² L4 3269 lm (2x2) 5498 lm (1x4)	9. MOUNTING T Recessed T-bar D Recessed Drywall S Surface Available for vertical or horizontal mounting	10. VOLTAGE 1 120 V 2 277 V 3 347 V ³ 4 UNV (120 - 277V)	11. CONTROLS N None
2. COLOR TEMP 2L50K 5000K	See pages 5-8 for complete Configuration Codes		8. CIRCUITRY 1 1 Circuit			12. OPTIONS N None RF Medical Power Line Filter (Remote)
3. SIZE 22 2 x 2 ft 14 1 x 4 ft						

*Please note Light Level Codes have been updated in accordance with UL certification standards. | 1 Customer must provide their own high-res PDF file. | 2 All drivers remote mounted. | 3 Consult factory.

- Select Driver:
- Factory option 0-10V, 1% Dimming
 - D2** DALI
 - LHE** Lutron H-Series Hi-lume 1% EcoSystem LED Driver
 - L5E** Lutron 5-Series EcoSystem LED Driver

DIMENSIONS

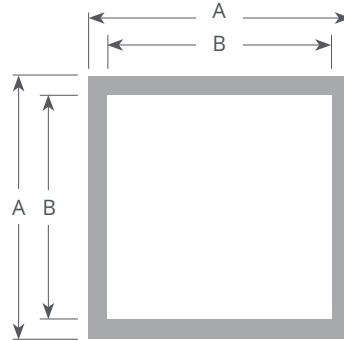


1x4 Pendant

C = 1241.0 [48.9]
 D = 1114.4 [43.9]
 E = 330.0 [13.0]
 F = 203.5 [8.0]

1x4 Recessed & Surface

C = 1212.0 [47.7]
 D = 1112.0 [43.8]
 E = 301.0 [11.9]
 F = 241.0 [9.5]



2x2 Pendant

A = 634.0 [25.0]
 B = 500.0 [19.7]

2x2 Recessed & Surface

A = 602.1 [23.7]
 B = 538.5 [21.2]

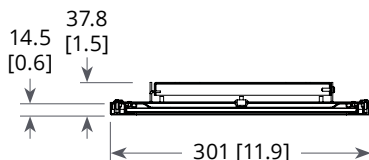
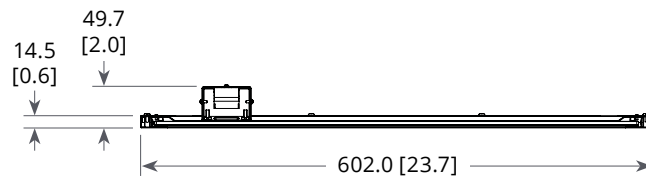
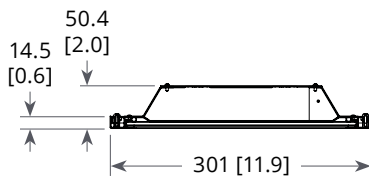
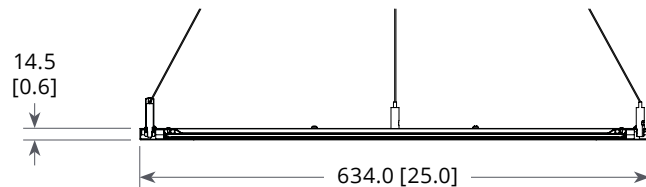
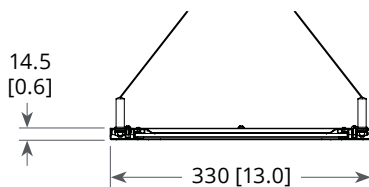
CROSS SECTIONS

Width & Height

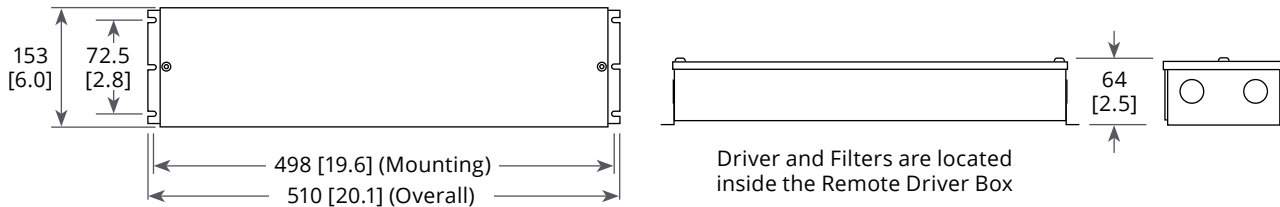
Overall height will vary due to hanger/mounting components and driver boxes. More detailed cross sections are available in the standard SCENE Spec Sheets at <https://www.metalumen.com/product-family/scene/>

1x4

2x2



Remote Driver Box



Remote Driver Mounting Maximum Wire Length									
Light Level	Driver Qty.	Driver Current (mA)	Fixture Length	Distance in feet / Wire Gauge					
				22 Ga.	20 Ga.	18 Ga.	16 Ga.	14 Ga.	12 Ga.
L1	1	700	2x2	13	42	67	107	170	280
L2	1	1050	2x2	8	28	45	71	113	180
L3	1	1200	2x2	7	25	39	62	99	157
L4	1	1400	2x2	6	21	34	53	85	135

SPECIFICATIONS

Due to the Continuous Improvement Policy at Metalumen, we reserve the right to change our specifications without notice.

Housing: Luminaire body is constructed with 22 gauge cold rolled steel and 20 gauge aluminum, and welded seams.

Optical System: The light emitted from the mid-flux LEDs is channeled inside Metalumen's AccuRay® optical plane where a precisely controlled micro dot matrix pattern directs, shapes and distributes the light throughout the material. A high performance optical reflector and diffuser further guide and extract the light with superb efficiency and beam control. Custom graphics must be provided by customer in PDF format.

CRI: 83+ (5000K) (80 minimum)

Consult factory for 90+ CRI.

Lumen Maintenance: At an ambient operating temperature of 25°C the LED lifetime expectancy ≥ 60 000hrs at L70.

Finish: The luminaire housing and associated parts are finished in highly reflective, matte powder coat white paint (91% reflectance) or antimicrobial white paint. For custom finish, consult factory.

Mounting: PENDANT: Aircraft cable complete with a Quick-Grip field adjustable suspension system provides for quick and easy onsite alignment. RECESSED: Fits 9/16" and 15/16" T-Bars. Mounting brackets/clips provided. SURFACE: Mounting brackets

provided.

Drivers: Metalumen offers dimming* drivers as a standard on our entire LED product offering at 0-10V. Dimming range is 1%-100%. Power factor is > 90%. Class 2 rating. Driver location is contingent on the product model, mounting, or an optional location selected by customer in the Ordering Logic.

RFI Filter: The noise suppression filter provides exceptional suppression of broadband, common mode, and differential mode noise across a wide frequency range, ensuring stable, interference-free power converter operation. Effective above 30kHz, it

adapts dynamically to operational conditions, reducing harmonics and mitigating high-frequency parasitics for optimal performance. When installed, the RFI filter is placed inside a remote driver box.

Approvals: All components are UL/CSA/QPS recognized or listed. This product is cULus listed.

RECESSED: Plenum - CCEA approved.

Environment: Suitable for dry or damp locations.

**Standard drivers compatible with passive/sinking dimmers. Please contact Metalumen if active/sourcing dimmer support is required.*

CLEANING INSTRUCTIONS

To clean the optics: Gently wipe down the optics with a clean, dry cloth to remove any dust and light residues. For heavier smudges, spray clean cloth with mild soap and water solution and gently wipe optics surface.

Warning: Hard wiping and abrasive cloths will scratch the optics. DO NOT USE cleaning products containing alcohol or acetone which will damage the optics.

WARRANTY

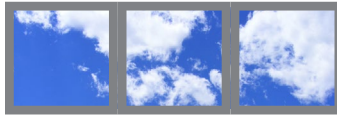
Metalumen will warrant defective luminaires for 5 years from date of purchase. Warranty is valid if luminaire is installed and used according to specification. If defective, Metalumen will send replacement boards or drivers at no cost along with detailed replacement instructions and instructions on how to return defective components to Metalumen.

PHOTO GRAPHICS & CONFIGURATION CODES | SKY

G1A



G1C



G1D



G1B



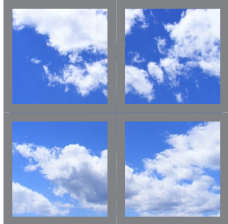
G1F



G1G



G1E



G1H



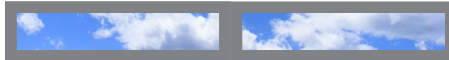
G1I



G1J



G1K



G1M

SKY CUSTOM CONFIGURATION
Consult factory for custom configurations.

G1L



PHOTO GRAPHICS & CONFIGURATION CODES | OCEAN LIFE

G2A



G2C



G2D



G2B



G2F



G2G



G2E



G2H



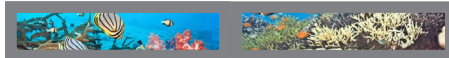
G2I



G2J



G2K



G2L



G2M

OCEAN LIFE CUSTOM CONFIGURATION
Consult factory for custom configurations.

PHOTO GRAPHICS & CONFIGURATION CODES | MOUNTAINS

G3A



G3C



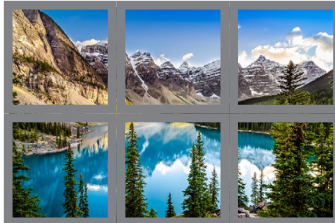
G3D



G3B



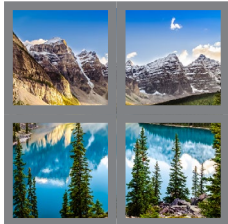
G3F



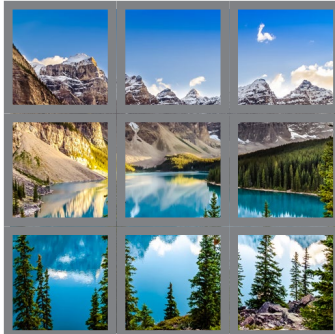
G3G



G3E



G3H



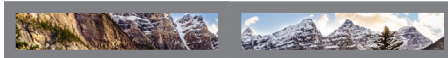
G3I



G3J



G3K



G3L



G3M

MOUNTAINS CUSTOM CONFIGURATION
Consult factory for custom configurations.

PHOTO GRAPHICS & CONFIGURATION CODES | BEACH

G4A



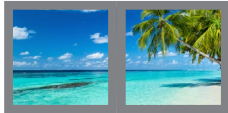
G4C



G4D



G4B



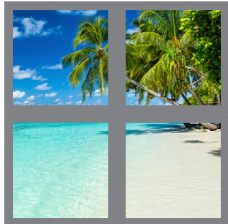
G4F



G4G



G4E



G4H



G4I



G4J



G4K



G4L



G4M

BEACH CUSTOM CONFIGURATION
Consult factory for custom configurations.